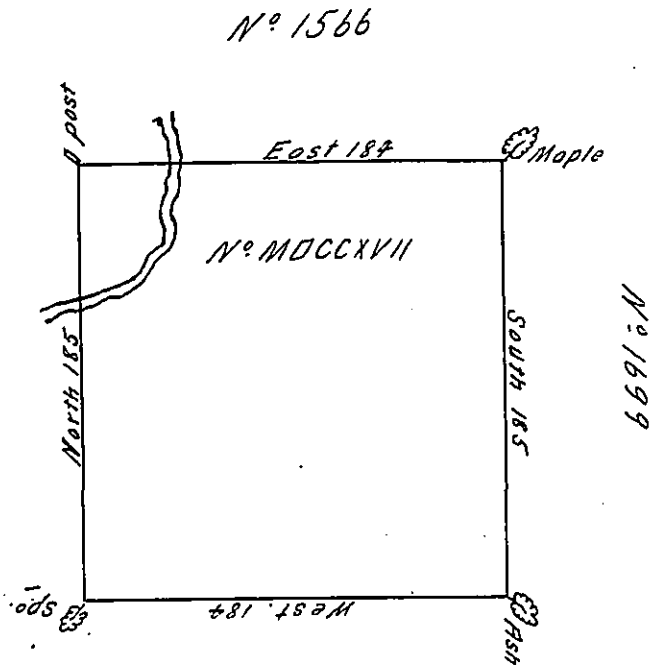


Drawn 2nd October
1806 by W. Helfen
stein for Mary
McCalla Widow
of W^m Hays. private



In pursuance of an Act of General Assembly
of the state of Pennsylvania, passed the 24th day of February, 1785,
entitled "An Act for directing the mode of distributing the Donation
Lands promised the Troops of this Commonwealth"; and by order of
the Surveyor General with the approbation of the Honourable the
Supreme Executive Council, I have surveyed on the 12th day of Octo-
ber 1785, the above described Tract of two hundred acres of land,
and allowance of six per cent. for roads, &c. No. 1717 situate in
District No. 8. on the west side of the Alleghany river, in the county
of Westmoreland.

To John Lukens, Esq. }
Surveyor General.

Alexander M. Dowell D.S.

now Crawford County

IN TESTIMONY that the above is a copy of the original remaining on file in
the Department of Internal Affairs of Pennsylvania, made
conformably to an Act of Assembly approved the 16th day of
February, 1833, I have hereunto set my Hand and caused
the Seal of said Department to be affixed at Harrisburg,
this Sixth day of May 1908

Henry Howell
Secretary of Internal Affairs.